

# Match Results

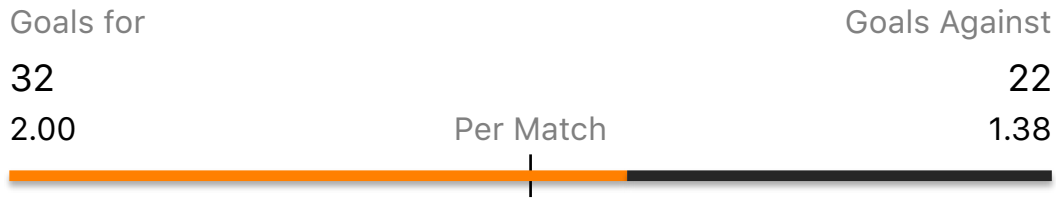
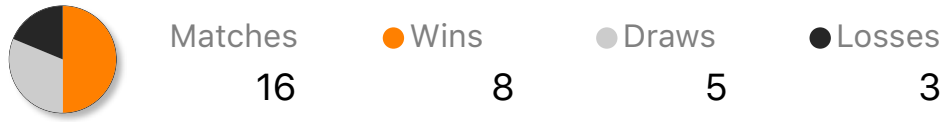
2015/11/21 04:27

Team	East Tokyo SC	Opponent	All Teams	Term	None
Season	2013	Competition	All	Match Type	All

Date	Season/Competition	Result	Score	Opponent
2013.06.09 10:30	2013/League	●	2 - 0	AC Morioka
2013.05.19 10:30	2013/League	●	3 - 1	Marine Shonan
2013.05.12 10:00	2013/League	●	3 - 1	AC Morioka
2013.05.05 10:30	2013/League	●	2 - 1	FC Hiroshima
2013.05.03 13:00	2013/League	●	1 - 2	Kobe U-15
2013.04.20 10:30	2013/League	●	2 - 3	Urawa U-15
2013.04.14 10:30	2013/League	●	2 - 1	Marine Shonan
2013.04.06 13:30	2013/League	●	5 - 2	Kobe U-15
2013.03.30 13:20	2013/League	●	1 - 2	FC Hiroshima
2013.03.02 09:30	2013/Winter cup	●	2 - 2	AC Morioka
2013.03.01 06:53	2013/Winter cup	●	0 - 0	Kobe U-15
2013.02.10 10:00	2013/Winter cup	●	2 - 1	Yokohama UTD
2013.01.28 05:40	2013/Winter cup	●	3 - 2	Marine Shonan
2013.01.22 13:30	2013/Pre-season	●	2 - 2	AC Morioka
2013.01.20 13:00	2013/Pre-season	●	1 <sub>5</sub> - 4 <sub>4</sub> 1	Urawa U-15
2013.01.19 14:00	2013/Pre-season	●	1 - 1	Yokohama UTD

Team	East Tokyo SC	Opponent	All Teams	Term	None
Season	2013	Competition	All	Match Type	All

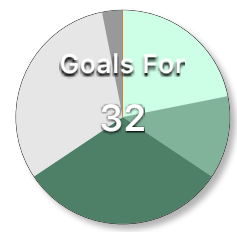
Results



Details

Goals per 10 minutes

7	22%	1st period	23%	5
4	12%	2nd period	27%	6
10	31%	3rd period	23%	5
10	31%	4th period	27%	6
1	3%	5th period	0%	0
0	0%	6th period	0%	0
0	0%	7th period	0%	0
0	0%	8th period	0%	0
0	0%	9th period	0%	0
0	0%	10th period	0%	0



Stats

	Total	AVG		Total	AVG
Assists	16	1.00	Shots	99	6.19
Passes	115	7.19	Crosses	70	4.38
Dribbles	79	4.94	Intercepts	32	2.00
Blocks	10	0.62	Saves	32	2.00
Offsides	33	2.06			
Fouls Won	38	2.38	PKs Won	4	-
Fouls	63	3.94	PKs Allowed	4	-
Yellow Cards	19	1.19	Red Cards	1	-

Goals per period

\*Except 1 period matches

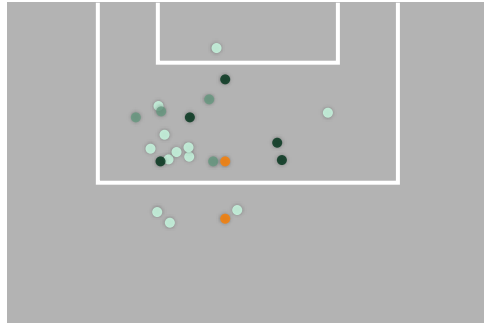
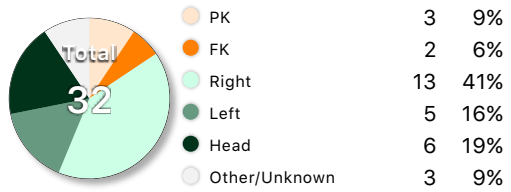
12	38%	0 - 10 min	55%	12
20	62%	10 - 20 min	45%	10



Team	East Tokyo SC	Opponent	All Teams	Term	None
Season	2013	Competition	All	Match Type	All

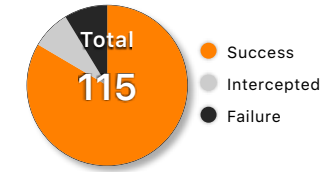
Details

Goals Details



Details

Passes Details

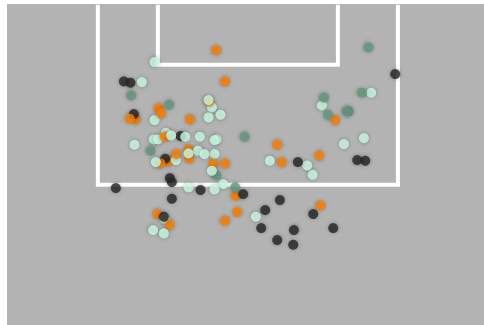


Crosses Details

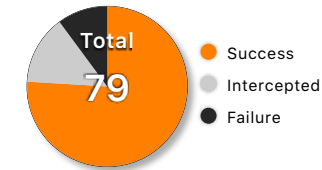


\*Except data ealier than ver6.0

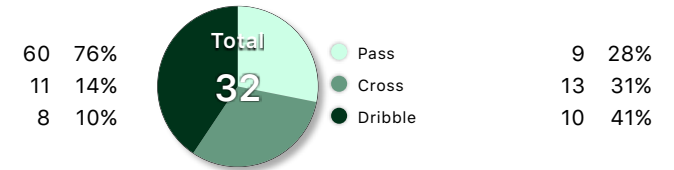
Shots Details



Dribbles Details

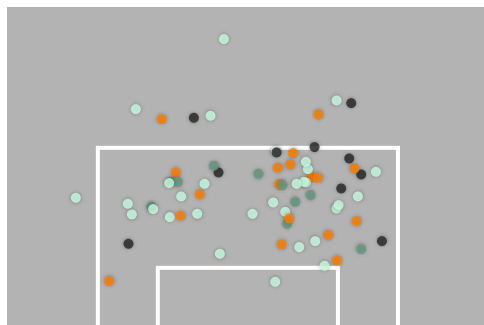


Intercepts Details



\*Except data ealier than ver6.0

Opponent's Shot



\*Except data ealier than ver6.0

Team	East Tokyo SC	Opponent	All Teams	Term	None
Season	2013	Competition	All	Match Type	All

Players

Goal	Assist
#10 Daiki Yamada 9	#31 Leo Kimura 4
#11 Masami Yanagimoto 8	#7 Nozomu Matsubara 3
#31 Leo Kimura 6	#10 Daiki Yamada 3

Shot

#11 Masami Yanagimoto 23
#10 Daiki Yamada 22
#31 Leo Kimura 12

Successful Pass

#7 Nozomu Matsubara 14	Kawaguchi → Yamada 3
#31 Leo Kimura 10	Takagi → Yanagimoto 3
#9 Aki Takagi 8	Kitazawa → Matsubara 3

Successful Cross

#7 Nozomu Matsubara 7	Rafael → Yanagimoto 3
#31 Leo Kimura 6	Matsubara → Yanagimoto 3
#9 Aki Takagi 5	Yamada → Hasegawa 2

Players

Receive	Successful Dribble
#11 Masami Yanagimoto 24	#10 Daiki Yamada 11
#10 Daiki Yamada 18	#31 Leo Kimura 11
#7 Nozomu Matsubara 18	#19 Yuki Nozawa 7


















Foul Won

#10 Daiki Yamada 7	#4 Ren Moriyama 10
#11 Masami Yanagimoto 7	#2 Syouji Kitazawa 5
#31 Leo Kimura 6	# Sotaro Maehara 3

# Players Stats

2015/11/21 04:27

Team	East Tokyo SC	Opponent	All Teams	Term	None
Season	2013	Competition	All	Match Type	All

Pos	Num	Player	 Minutes	 Match	 Goal	 Assist	 Shot	 Pass	 Cross	 Dribble	 Receive	 Intercept	 Block	 Save	 FoulWon	 Foul	 Caution	 SendOff	 Offside
GK	1	Atsushi Fukuda	691	16	0	0	0-0	1-1	0-0	0-0	0	0	0	18-29	0	0	0	0	0
DF		Sotaro Maehara	478	12	0	0	0-0	2-2	0-0	0-0	0	3	3	0-2	0	3	1	0	0
DF	2	Syouji Kitazawa	438	12	0	0	0-0	8-8	0-0	1-1	0	5	2	0-0	0	1	1	0	0
DF	4	Ren Moriyama	718	16	2	0	6-5	9-7	0-0	2-2	3	10	5	0-0	0	6	4	0	0
DF	5	Ryota Matsunaga	404	11	0	0	2-1	3-3	1-0	2-2	2	2	0	0-0	0	3	0	0	0
MF		Ryo Kawaguchi	406	11	0	0	1-0	7-5	1-1	1-0	3	2	0	0-0	0	3	0	0	0
MF	31	Leo Kimura	585	16	6	4	12-9	11-10	12-6	14-11	11	2	0	0-0	6	2	0	0	1
MF	6	Koji Sawa	460	12	1	1	5-3	7-6	3-2	3-2	4	2	0	0-0	1	7	3	0	0
MF	7	Nozomu Matsubara	408	12	1	3	5-3	17-14	10-7	7-6	18	2	0	0-0	0	9	3	0	1
MF	9	Aki Takagi	540	14	2	2	8-5	10-8	7-5	9-5	8	2	0	0-0	0	5	1	0	3
FW	10	Daiki Yamada	523	14	9	3	22-18	8-7	9-5	12-11	18	0	0	0-0	7	2	0	0	2
FW	11	Masami Yanagimoto	642	16	8	0	23-19	6-5	4-2	5-4	24	0	0	0-0	7	2	0	0	5
- -	19	Yuki Nozawa	509	12	0	0	4-2	11-8	3-1	8-7	13	0	0	0-0	0	1	1	0	3
- -	25	Kenichiro Tani	423	12	1	1	4-3	7-5	3-1	5-3	5	0	0	0-1	2	2	1	1	2
- -	29	Yuichi Hasegawa	297	13	2	0	6-6	3-3	6-3	6-4	8	1	0	0-0	4	4	1	0	2
- -	31	Yuichi Miura	288	11	0	0	1-1	4-4	4-1	1-1	3	1	0	0-0	0	5	0	0	2